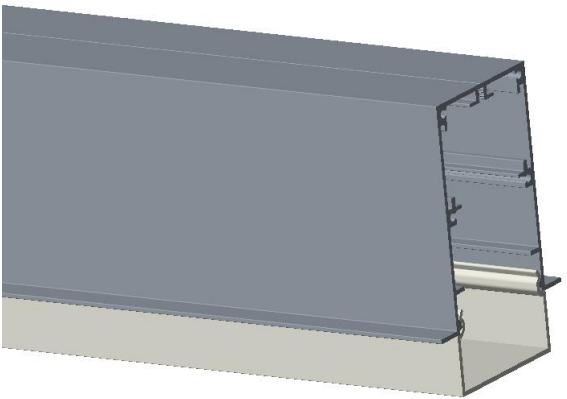
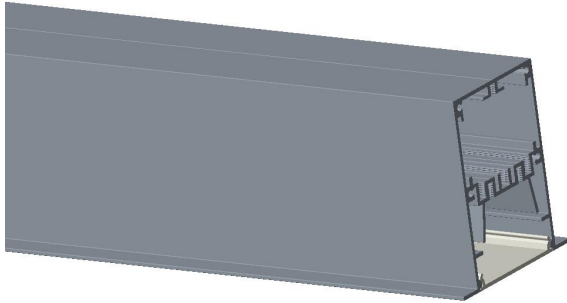
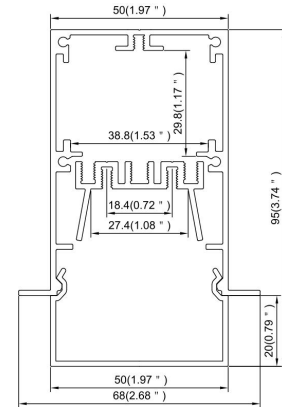
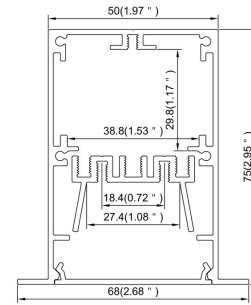


Model : 7534R/7534RS



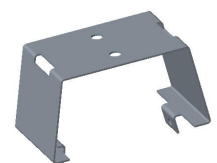
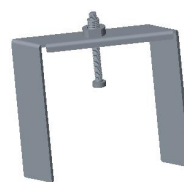
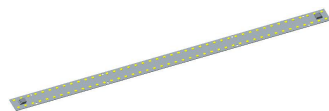
### Dimension



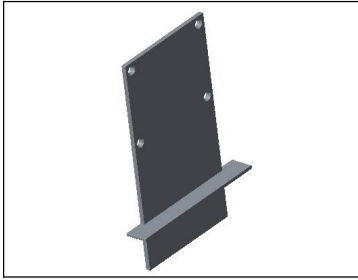
### Specification

|                  |   |
|------------------|---|
| Aluminum Profile | Die-cast aluminum   |
| Diffuser         | Polycarbonate frosted cover   |
| Length           | Custom Length   |
| IP Rating        | IP20  |
| LED model        | Samsung   |
| Max Power        | 30W/m   |
| Beam angle       | 100°  |
| Finish           | Silver / Black anodized , Powder coated white / black or other colors |
| Installation     | Recessed  |

### Accessories



End cap (metal)



End cap for 7534RS(metal)

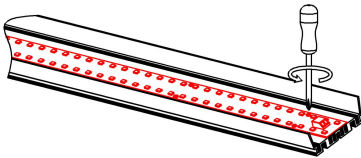
LED Module

Recessed frame

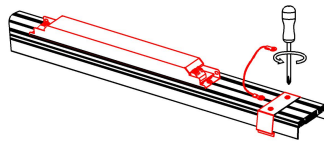
Internal clip

### Steps of Installation

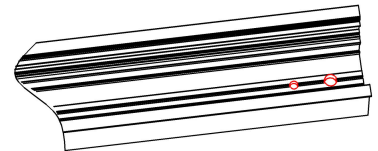
8. Drill the hole for power cable, then mount the LED module on the profile B



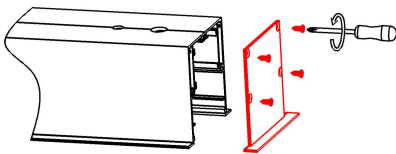
2. Connect the cable to LED driver, then mount the inside clip on the back of profile B



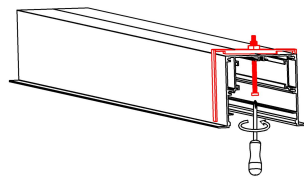
3. Drill the holes for recessed frame and power cord



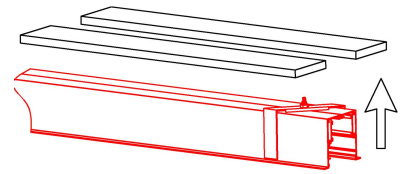
4. Mount the end caps



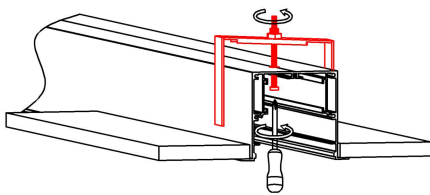
5. Mount the recessed frames on the profile A



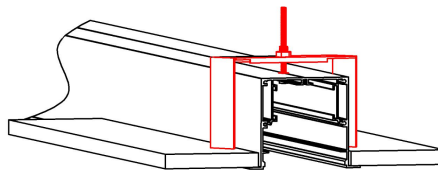
6. Push the fixture to the ceiling



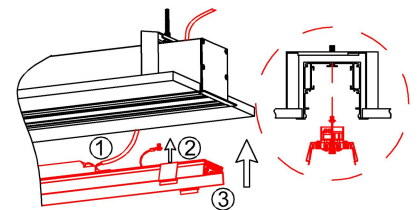
4. Tighten the screw to fix the profile



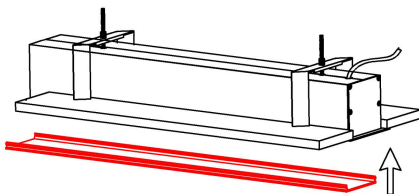
5. After step4 ensure the recessed frame installed condition like this



6. (1)Connect power cord (2) Click the profile B



10. Press the cover



11. Installation completed

